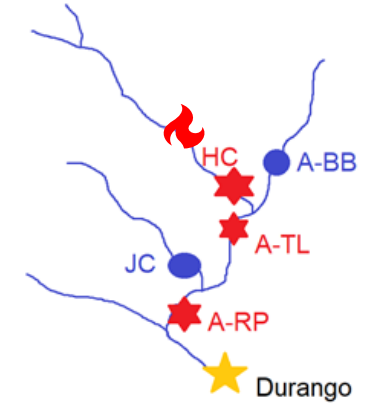
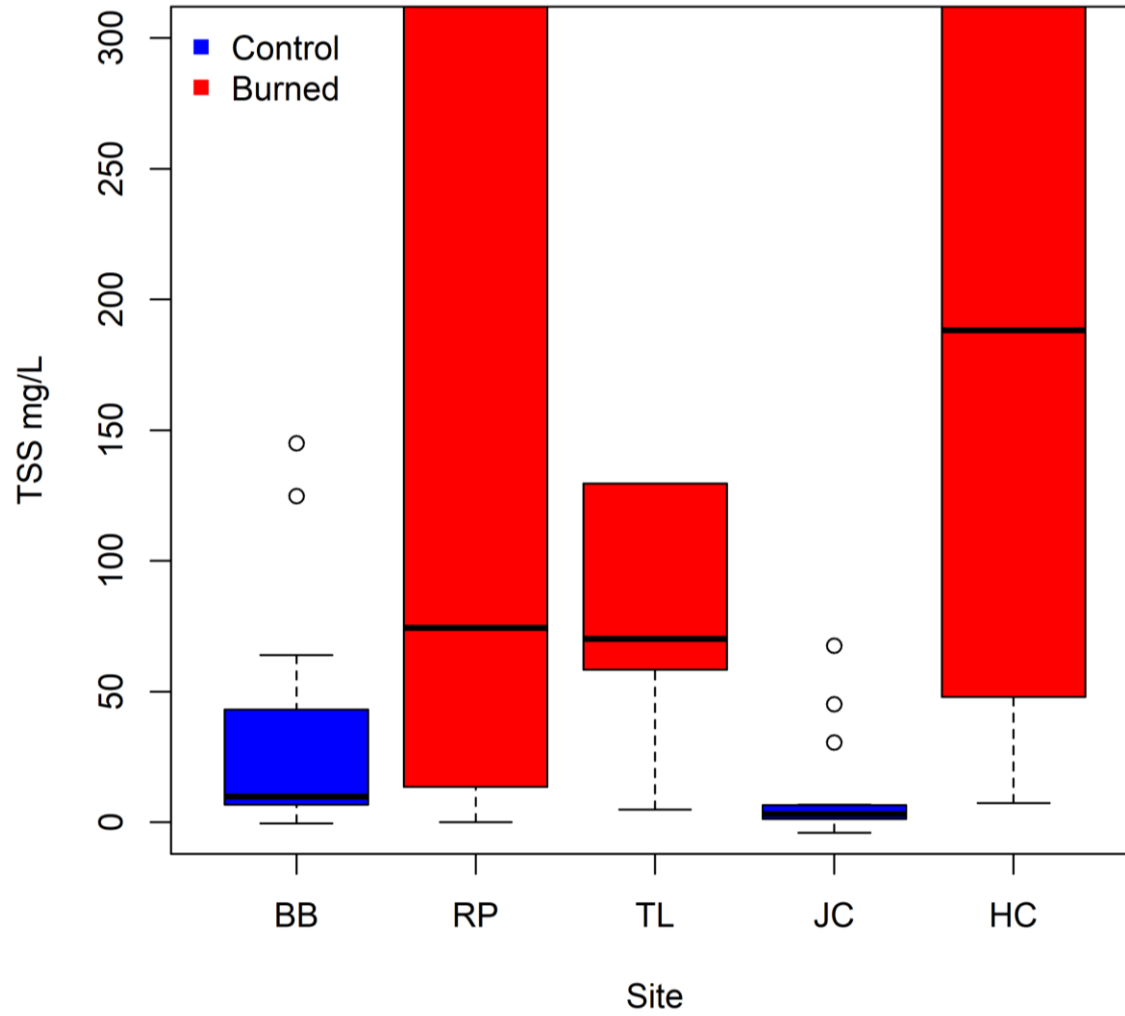
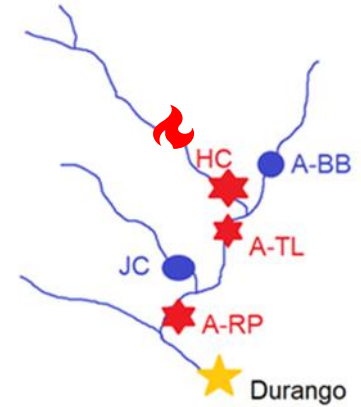
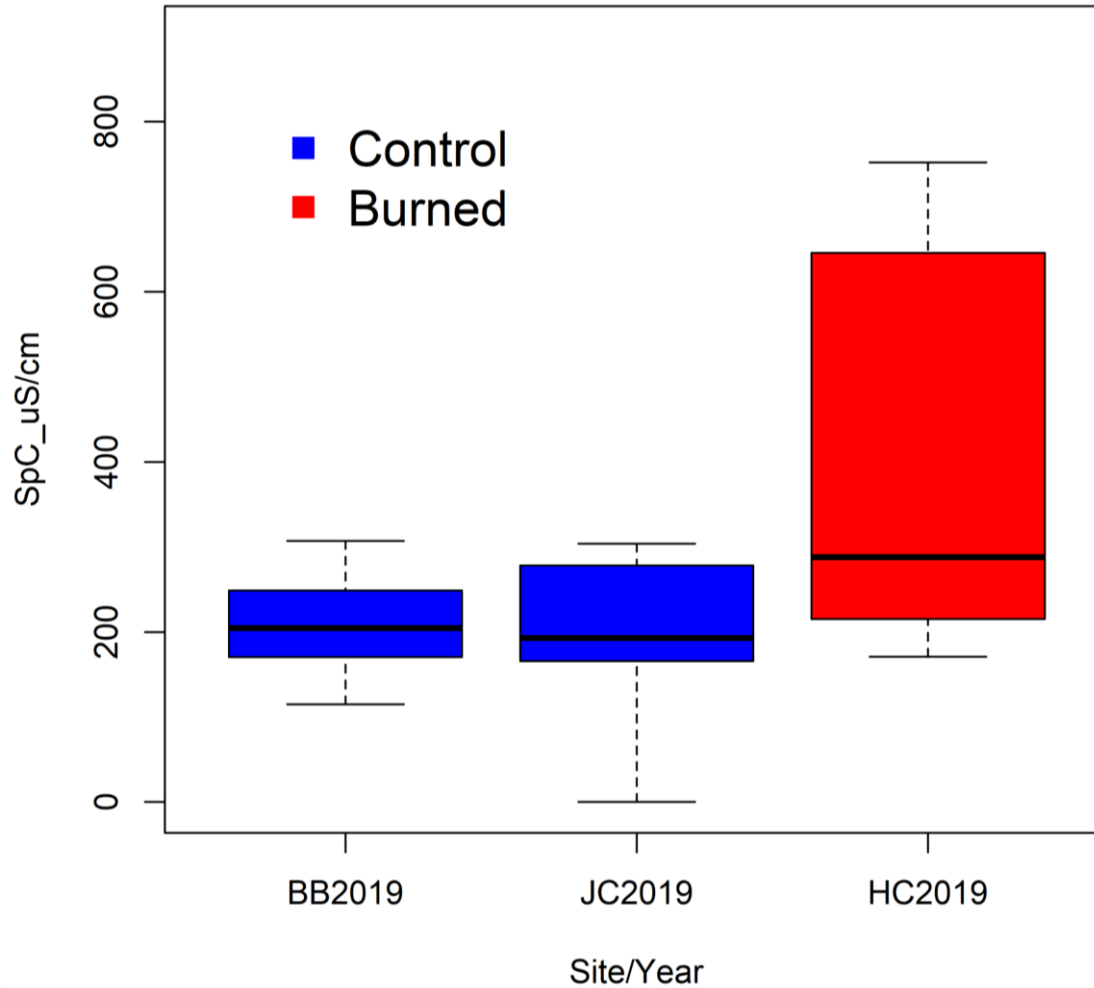


# WATER QUALITY RESULTS: TOTAL SUSPENDED SOLIDS (TSS)



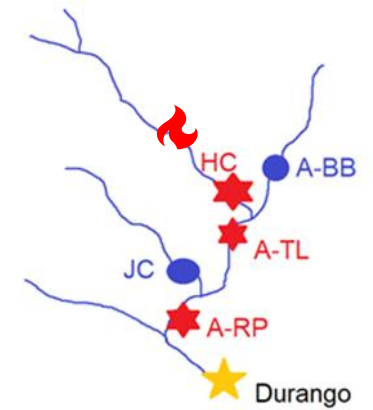
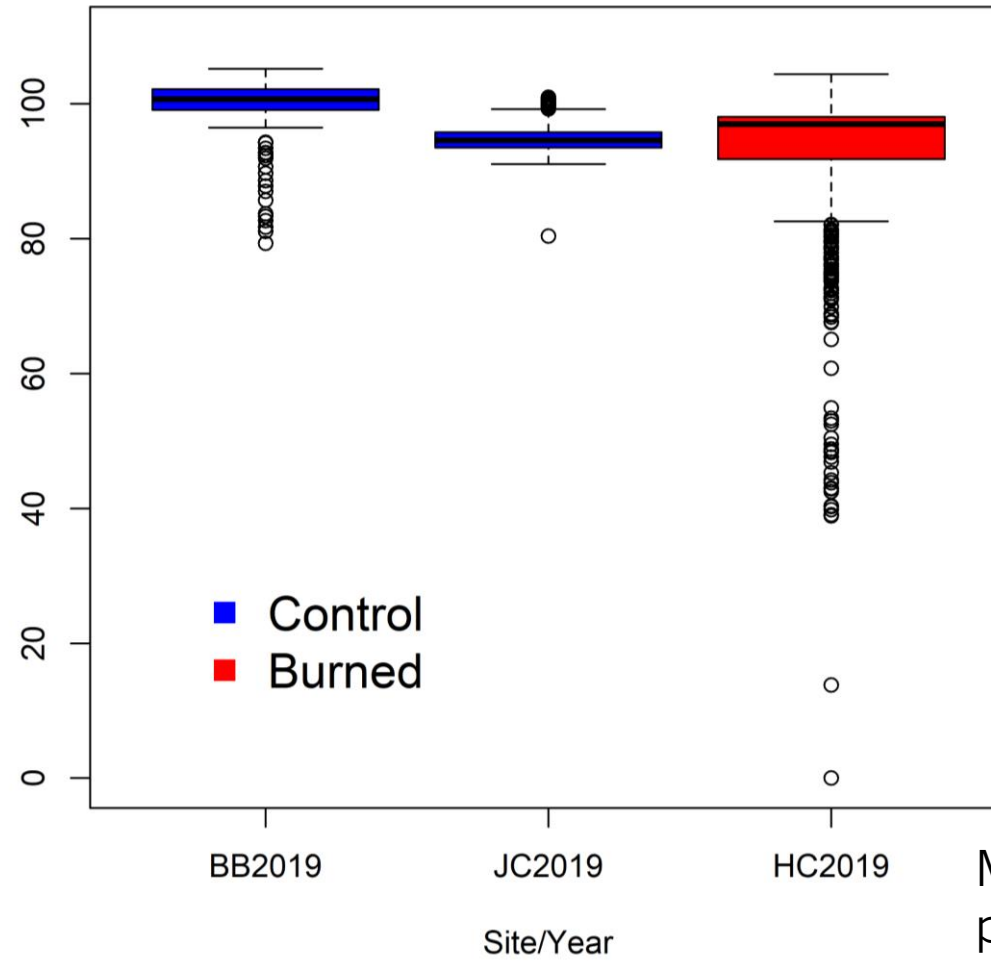
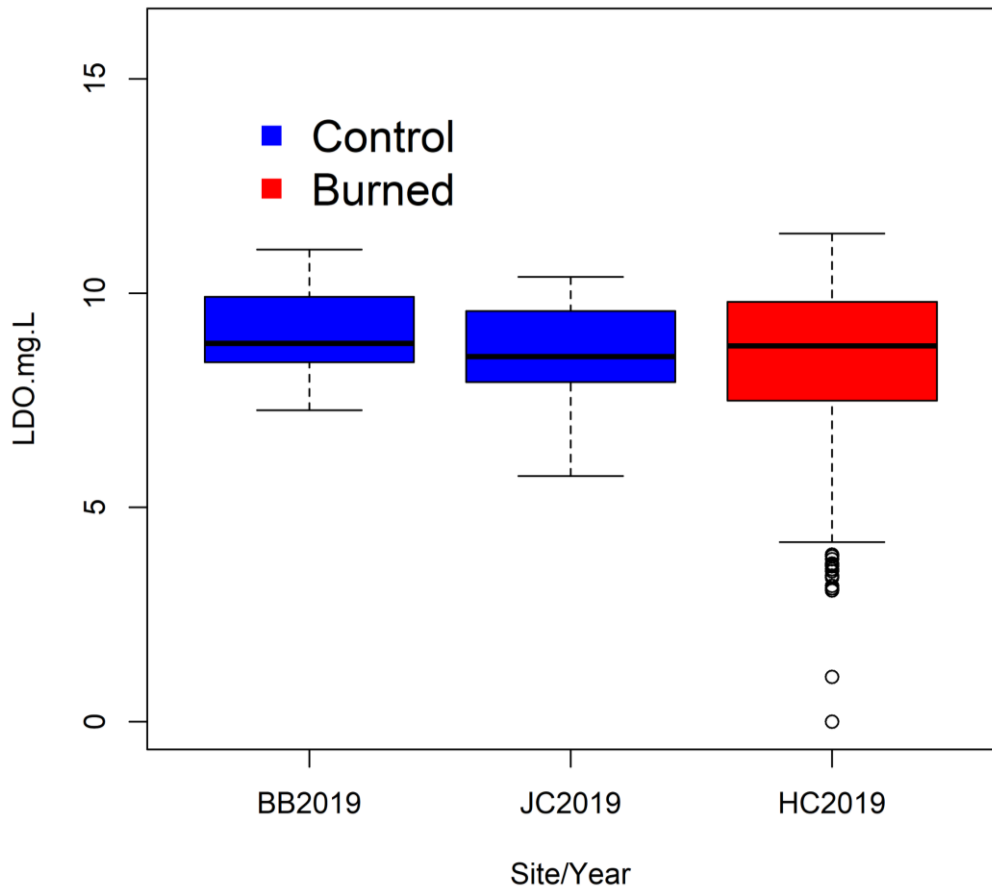
Mann-Whitney U test  
 $p < 0.05$

# WATER QUALITY RESULTS: SPECIFIC CONDUCTIVITY



Mann-Whitney U test  
 $p < 0.05$

# WATER QUALITY RESULTS: DISSOLVED OXYGEN



Mann-Whitney U test  
 $p < 0.05$