



**WILDFIRE  
ADAPTED  
PARTNERSHIP**

# 2021 Programs

Alex Graf  
Montezuma County  
Coordinator



1

# Who is Wildfire Adapted?





**WILDFIRE  
ADAPTED  
PARTNERSHIP**

# MEET THE TEAM

WILDFIREADAPTED.ORG

**"WILDFIRE ADAPTED  
PARTNERSHIP (WAP) INSPIRES,  
EDUCATES AND ENABLES  
INDIVIDUALS AND COMMUNITIES  
TO PROTECT LIVES AND  
PROPERTY FROM WILDFIRE."**



**Ashley Downing**  
Executive Director



**Alex Graf**  
Montezuma County  
Coordinator

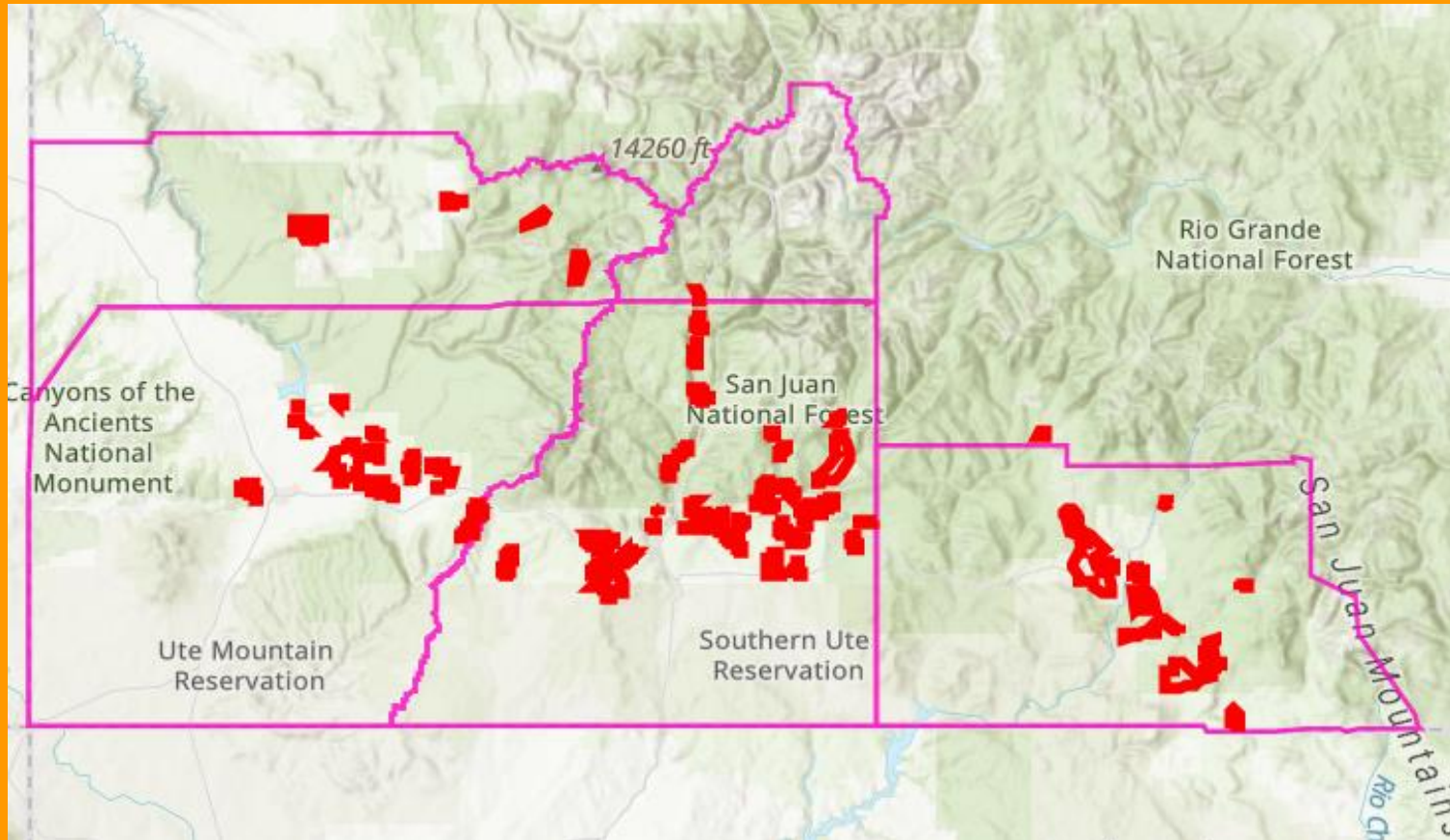


**Charlie  
Landsman**  
La Plata County  
Coordinator



**Bill Trimarco**  
Archuleta County  
Coordinator

# Ambassador Communities



- 100+ Communities
- 140+ Ambassadors



*WAP inspires, educates and enables individuals and communities to protect lives and properties from wildfire.*

# 2

# 2021 Programs

Site-Visits, Cost  
Share, Chipper  
Rebate!



# Free Site-Assessments



- Hour-long wildfire risk assessment
- 100% free
- HIZ approach – Defensible Space and Ember Awareness
- Sign up on our website!



*WAP inspires, educates and enables individuals and communities to protect lives and properties from wildfire.*

# Defensible Space Cost-Share Program

- Depends on Geography/Subdivision
- Starts with a “Site-Assessment”
- Sign up for an Assessment to find out if your area qualifies for a cost-share project!



Before



After



# Chipper Rental Rebate Program

- Slash piles?
- **April 1 – September 30, 2021**



- Individuals are eligible for a 50% reimbursement (maximum \$250) and HOAs/communities are eligible for a 50% reimbursement (maximum \$750) of chipping expenses.





# Community Wildfire Preparedness Workshop Series

- Wednesday, May 5<sup>th</sup>, 6-7pm
- Monday, May 24<sup>th</sup> 12-1pm
- Virtual via Zoom
- Sign up on our website!



## COMMUNITY WILDFIRE PREPAREDNESS WORKSHOP SERIES

Wednesday, May 5<sup>th</sup> 6PM-7PM:  
Living with Wildfire - FAC 101

Monday, May 24<sup>th</sup> 12PM-1PM :  
The Home Ignition Zone

Virtual Workshops Via Zoom



### LIVING WITH WILDFIRE - FAC 101

In this session participants will learn more about the fire history of southwest Colorado, what it means to build a fire adapted community, and the first steps residents can take this spring to protect their homes from wildfire.

### THE HOME IGNITION ZONE

The Home Ignition Zone (HIZ) takes a dual pronged approach to assessing a property's wildfire vulnerability: structural resistance to embers and defensible space. Participants will learn how to recognize the many vulnerabilities homes have to radiant heat and ember showers from wildfires.

TO LEARN MORE AND REGISTER, PLEASE  
VISIT:

[www.wildfireadapted.org](http://www.wildfireadapted.org)

# Real Estate Continuing Education Course – The Home Ignition Zone

- Tuesday, May 11<sup>th</sup>, 1-2pm
- Thursday, May 20<sup>th</sup> 10-11am
- Virtual via Zoom
- Sign up on our website!



## COLORADO REAL ESTATE CONTINUING EDUCATION CREDIT COURSE - HOME IGNITION ZONE



Tuesday, May 11th 1PM-2PM  
Thursday, May 20th 10AM-11AM

Virtual Workshops Via Zoom



### LEARN HOW TO IDENTIFY A HOME'S WILDFIRE VULNERABILITIES.

Participants will learn how to recognize the many vulnerabilities homes have to radiant heat and ember showers from wildfires and steps that homeowners can take to address these vulnerabilities.

The course will also provide additional resources that can be used to help residents moving to southwest Colorado better understand what it means to live in the Wildland Urban Interface (WUI), where the threat of wildfires is the highest.

**FOR MORE INFORMATION AND TO REGISTER, PLEASE VISIT:**

**[www.wildfireadapted.org](http://www.wildfireadapted.org)**

*This course qualifies for 1 Colorado Real Estate Continuing Education credit.*

# Become an Ambassador!



Join Wildfire Adapted Partnership as a Neighborhood Ambassador and mobilize your community to engage in wildfire safety and wildfire preparedness activities!



*WAP inspires, educates and enables individuals and communities to protect lives and properties from wildfire.*

# Contact:

Alex Graf  
Montezuma County Coordinator  
[agraf@wildfireadapted.org](mailto:agraf@wildfireadapted.org)



**WILDFIRE  
ADAPTED  
PARTNERSHIP**

[info@wildfireadapted.org](mailto:info@wildfireadapted.org)

970-385-8909

701 Camino del Rio, Ste.

306

Durango, CO 81301

[www.WildfireAdapted.org](http://www.WildfireAdapted.org)